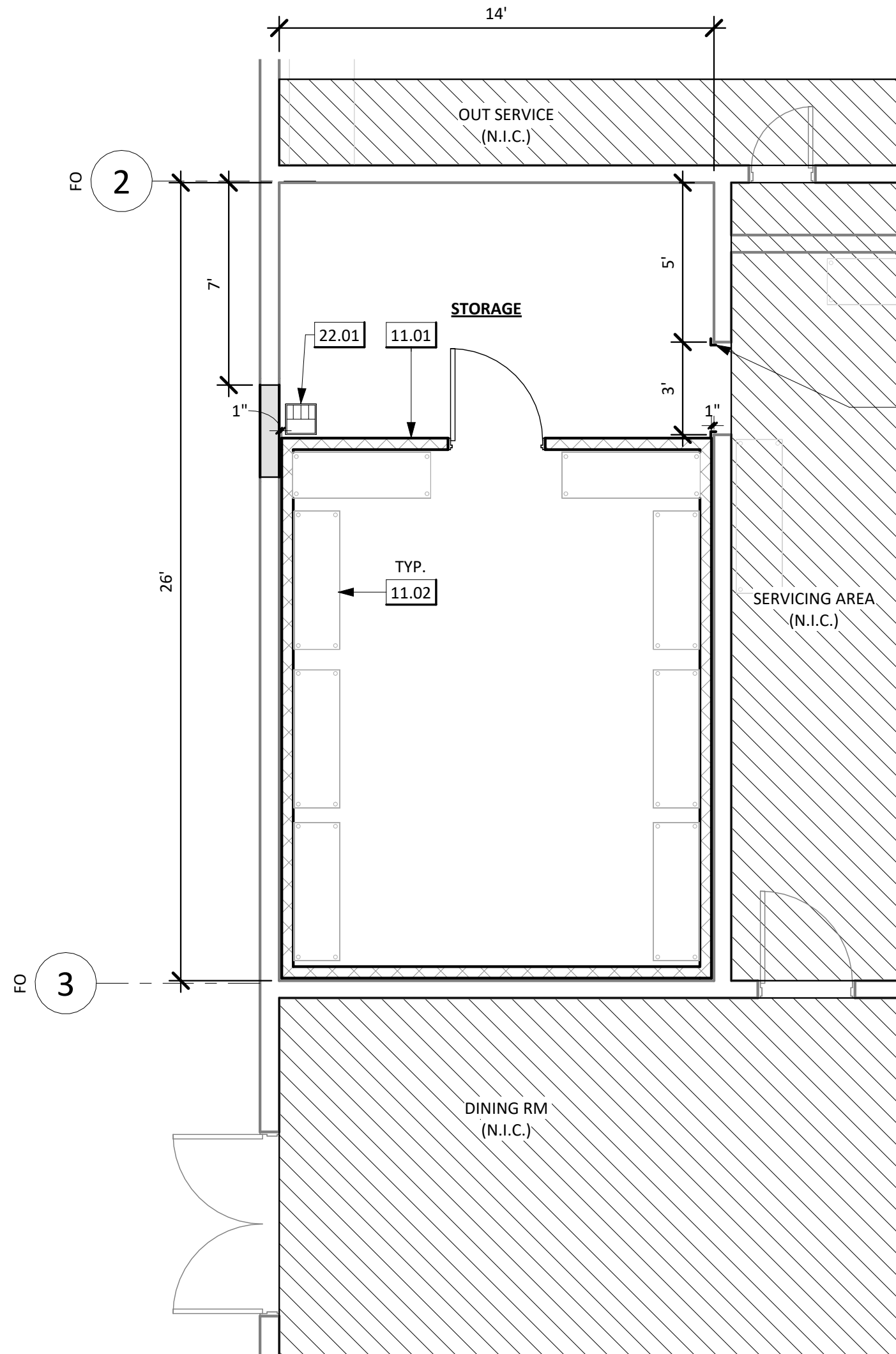
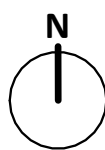


**1** DEMOLITION FLOOR PLAN  
1/4" = 1'-0"



**2** PROPOSED FLOOR PLAN  
1/4" = 1'-0"



FINISH SCHEDULE						
LOCATION	FLOOR	WALLS				CEILING FINISH
	FINISH	NORTH	EAST	SOUTH	WEST	
STORAGE	(E)SC	(E)PT/ACT	(E)PT/ACT	(E)PT/ACT	(E)PT/ACT	(E) PT

**FLOOR PLAN NOTES**

- CONTRACTOR TO FIELD VERIFY ALL DIMENSIONS.
- ALL ITEMS REFERENCED ARE (E) U.N.O.
- REFER TO GENERAL NOTES ON G1.0 - G1.3 FOR FURTHER INFORMATION & REQUIREMENTS.

**LEGEND**

SCOPE OF WORK

(N) INSULATED WALL PANEL - PER COLD BOX MFG

(E) WALL TO REMAIN - PROTECT IN PLACE

(N) INFILL WALL

NOT IN SCOPE

**FINISH LEGEND**

PT PAINT

**MATERIAL LEGEND**

SC SOLID CONCRETE  
ACT ACOUSTIC CEILING TILE

**KEYNOTES**

2.07 (D) WINDOW - TO BE INFILLED, MATCH ADJACENT FINISHES  
2.14 (E) CORNER GUARD TO REMAIN - PROTECT IN PLACE  
11.01 (N) WALK-IN FREEZER - PER MFG  
11.02 (N) WALK-IN FREEZER WIRE SHELVING UNITS - PER MFG  
22.01 (N) FLOOR SINK - PER PLUMBING

FOR DSA REVIEW ONLY - NOT FOR CONSTRUCTION

PREPARED FOR THE  
BOARD OF EDUCATION

PREPARED BY THE  
obrARCHITECTURE  
2419 EL CAJON BLVD., SAN DIEGO, CA 92104

DEMOLITION AND PROPOSED ENLARGED FLOOR PLAN

SAN DIEGO UNIFIED SCHOOL DISTRICT  
KITCHEN MODIFICATIONS GROUP 6  
CLAIREMONT HIGH SCHOOL  
4150 UTE DR, SAN DIEGO, CA 92117  
DSA SUBMITTAL SET

PROJECT NO. SDUF-006A  
R.S. A.P.  
FILE NAME  
DATE 02/20/2025

REVISIONS  
SHEET NO.  
**A1.1**